

Contact Information

Office	FLOuRISH Institute, Tokyo University of Agriculture and Technology
Address	3-5-8 Saiwai-cho, Fuchu, Tokyo 183-8509
Email	042-367-5756/5637
Email	innov@cc.tuat.ac.jp
URL	https://www.tuat-flourish.jp/

FLOuRISH



Institute for Fostering Leadership to create future value through Outstanding Research,
Innovation and Sustainable Higher education



For application guidelines, information sessions,
and applications for each program, please visit
the official website



Introduction

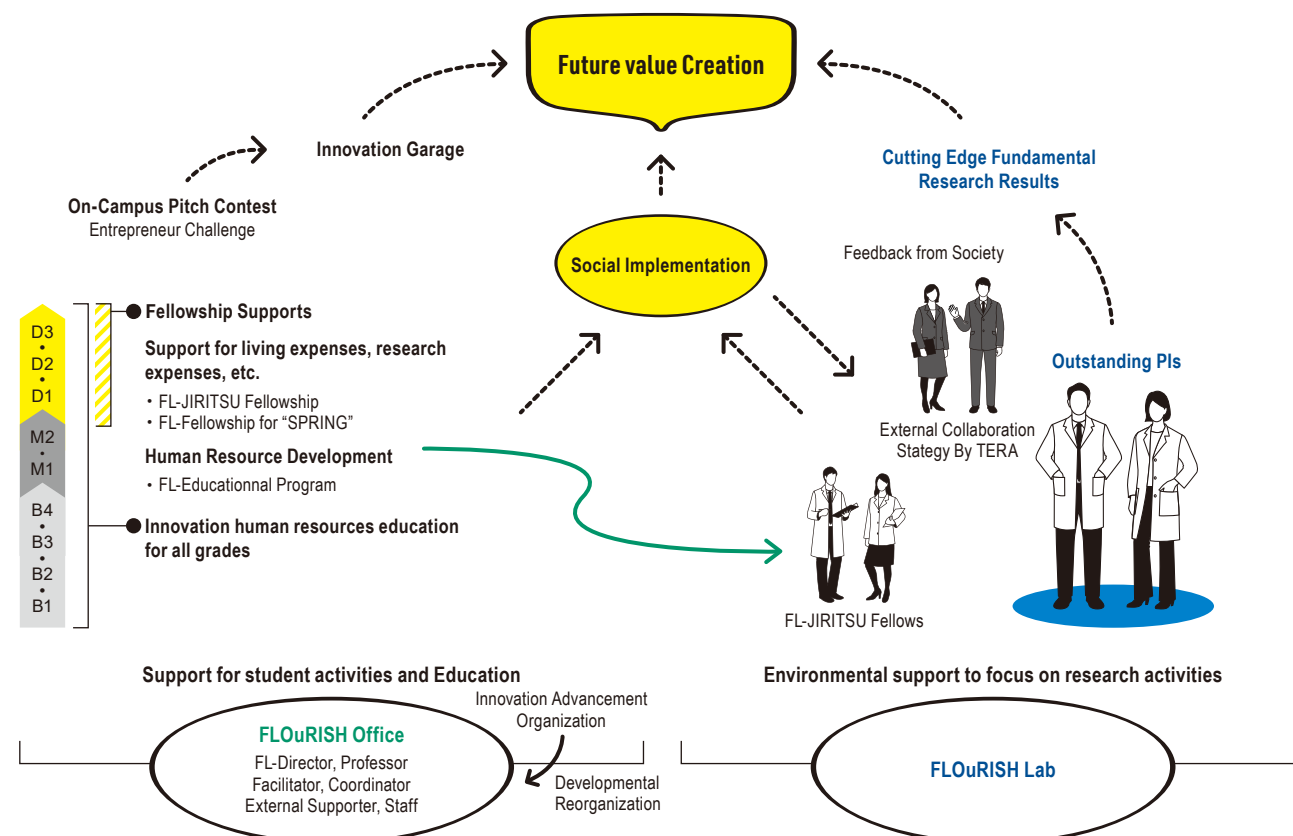
TUAT is a research-oriented university with advanced research capabilities and a strong foundation for collaboration with industry in education, research and innovation human resource development. In order to realize a university that promotes excellence in education and research on a par with the world's top universities, we have established the goal of "becoming a world-leading research university that maximizes the value of people intellectually and socially based on science," and we aim to reform and strengthen the functions of the university in order to cultivate advanced innovation leaders through cutting-edge research capabilities and industry-academia collaboration.

FLOuRISH Institute

Expanding the Future Value of People

The FLOuRISH Institute is a special research and education zone free from existing institutional limitations. It engages in the redistribution of internal resources by utilizing faculty members of TUAT Institutes and the reform of the personnel evaluation system, and we implement exemplary projects in national university reforms and reinforcement of ties with society. FLOuRISH provides an enriched program for graduate school literacy education using its unique innovation leader development program. It also conducts reforms of graduate school education that include the improved treatment of graduate school students based on its own incentive system JIRITSU and JST (FLOuRISH Fellowship for Support for Pioneering Research Initiated by the Next Generation). Along with these efforts, FLOuRISH is developing a new and unique graduate school organization so that graduate school students (FL-JIRITSU research fellows and FL-Next Generation fellows) as well as young principal investigators (PI) and people responsible for academic-industrial collaboration (Team Education and Research Administrators (TERA)) are fostered simultaneously.

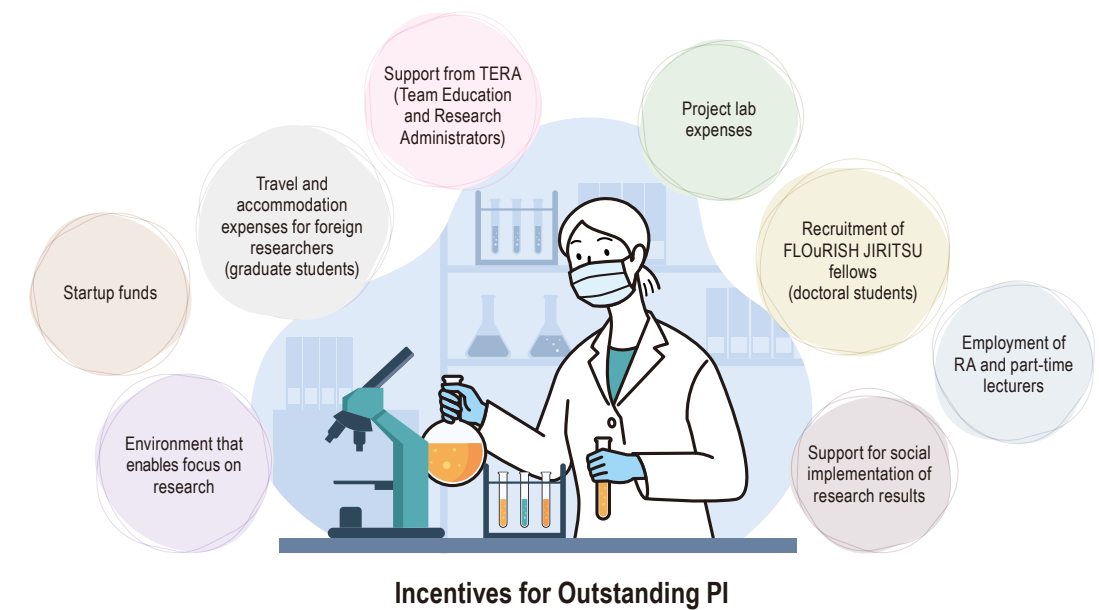
We aim to cultivate these people who create innovation, and we assume that it is important to learn entrepreneurship—a thought and an action elements needed to create new value—and maintain high aspirations and motivations regardless of generations, research fields, and job types, we provide university-wide innovation education programs.



FLOuRISH Social implementation support system for young researchers (for faculty members)

FLOuRISH Outstanding PI

To develop innovation leaders who can solve post-COVID-19 challenges, the FLOuRISH Institute establishes a special research and education zone as a venue for real science, by sophisticating our know-how and ideas, to promote graduate school literacy education, and provides innovative graduate school educational programs. In FLOuRISH temporary labs, outstanding PIs, FLOuRISH JIRITSU fellows (doctoral students), and other students carry out challenging and advanced research programs in cooperation with foreign super professors, corporate researchers, Team Education and Research Administrators (TERA), etc. The Institute also fosters FL-JIRITSU fellows who try career paths such as Next Generation PIs and entrepreneur and who can approach society with new ways of thinking, based on advanced research skills, with putting emphasis on diverse according to the individuality.



Eligible applicants

- TUAT faculty members with a track record in world-class research who gained a doctorate about 15 years ago and are conducting unique research.
- Applicants shall accept at least one FLOuRISH JIRITSU Fellow from 2022 and have the monetary resource (600,000 yen / person per year).



For further information about this program, please scan this QR code.

Selection criteria

- Track record in world-class research.
- Network with foreign research institutions, companies
- Unique research that impacts society
- Expected to achieve research results by focusing on research
- Expected to cultivate doctoral students.
- Interested in social implementation of research results in the form of a business launch.
- Allow graduate school students to take part in programs related with social implementation.



FLOuRISH Support for Fellows (for doctoral students)

FLOuRISH Fellowship Program for Support for Pioneering Research Initiated by the Next Generation (FL-Next Generation) ※1

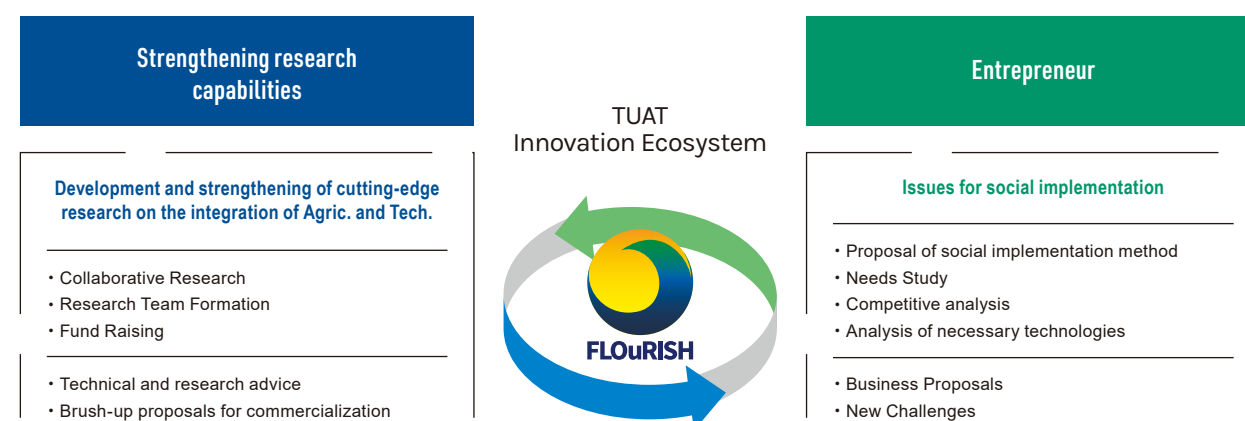
FLOuRISH JIRITSU (Self-reliance) Fellowship Program (FL-JIRITSU)

FLOuRISH offers two fellowship programs for students enrolled in our doctoral program. To foster human resources who can develop a broad scientific view and contribute to society based on advanced research capabilities and entrepreneurial overhead viewpoint, these fellowship programs aim to provide our doctoral students with necessary funds as research encouragement expenses (equivalent to living expenses) and research expenses and thereby create an environment where they can devote themselves to research. It also provides them with educational programs that help them gain a wider perspective for social implementation and business development. These fellowship programs intend to help develop science innovation leaders so that they can strengthen their advanced research skills from new unconventional perspectives.

(Application guidelines and other details are posted on the website. (<https://www.tuat-flourish.jp/>))

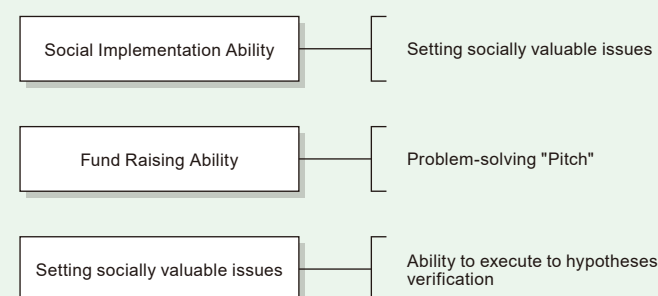
※1 : This program is launched after adoption of JST Support for Pioneering Research Initiated by the Next Generation Program.

Innovation Ecosystem and Ph.D. Research Capability



New research from social issues through both **strengthening research capabilities** and **entrepreneurship**

Program specifically strengthens



FLOuRISH Fellowship Schedule

~ Early April Fellowship application deadline
May Orientation



About FLOuRISH Fellowship Program for Support for Pioneering Research Initiated by the Next Generation (SPRING)

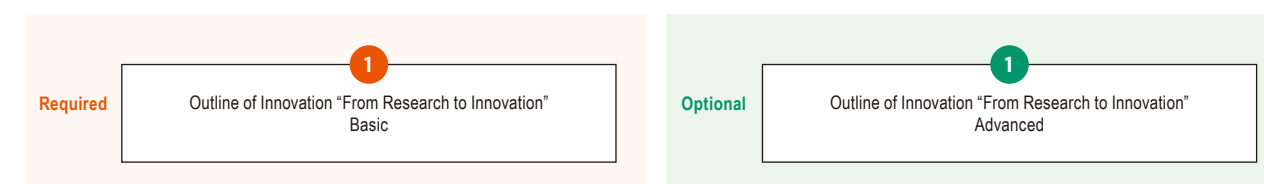


About FLOuRISH JIRITSU Fellowship Program

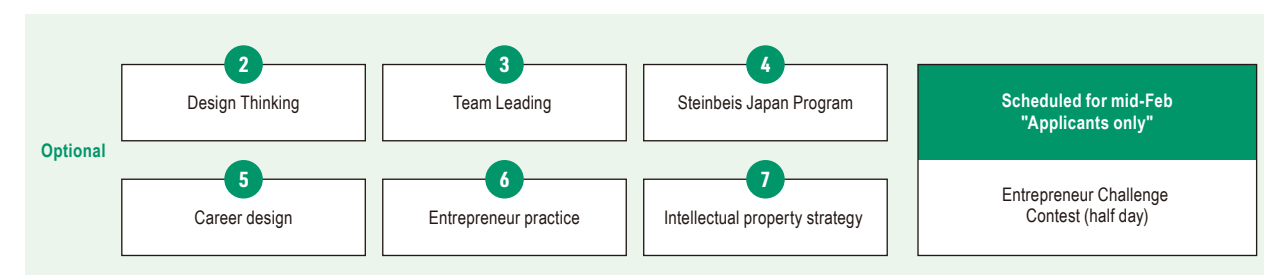
Examples of educational programs (offered by FLOuRISH in 2021)

There are **required programs** and **optional programs**.

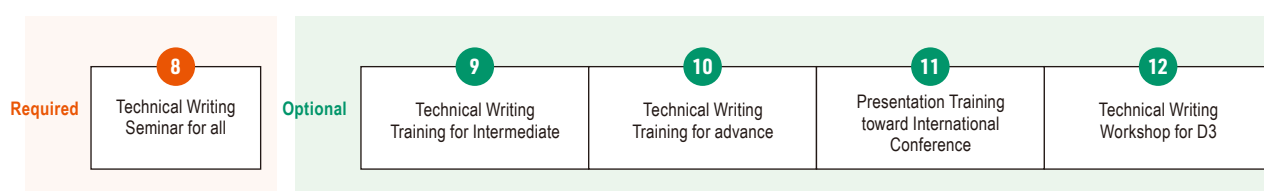
Introduction of Entrepreneurship



Application of Entrepreneurship



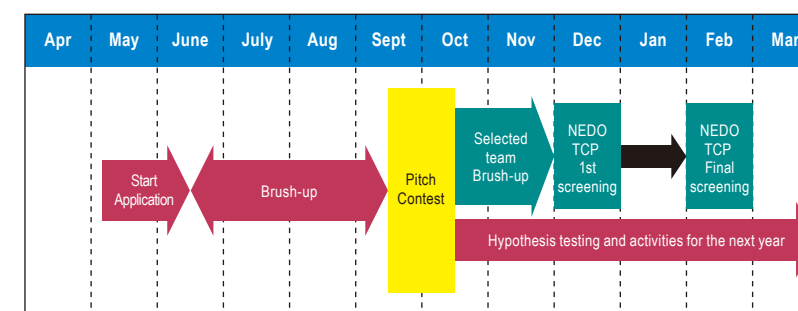
Enhancing Global Skills



FLOuRISH Program for Innovation Creation

Entrepreneur Challenge

We will hold a "Business Plan Pitch Contest" for all students, faculty and staff with the purpose of encouraging the social implementation of research and value creation activities aimed at creating future value. Individuals and teams will present their new value proposals in the "Pitch Contest". The best proposals will be awarded with the first prize, which includes expenses for promoting hypothesis verification. In addition, the FLOuRISH Office will provide support for business promotion, rental of activity space, etc. Additional prizes may also be awarded by the co-sponsors and supporting organizations (such as participation in the NEDO TCP program in 2023).



Judging Criteria ▼

(See the Guidelines for the year)

- Developing an attractive market
- Excellent solution to the problem
- Attractive business strategy
- Ability to execute